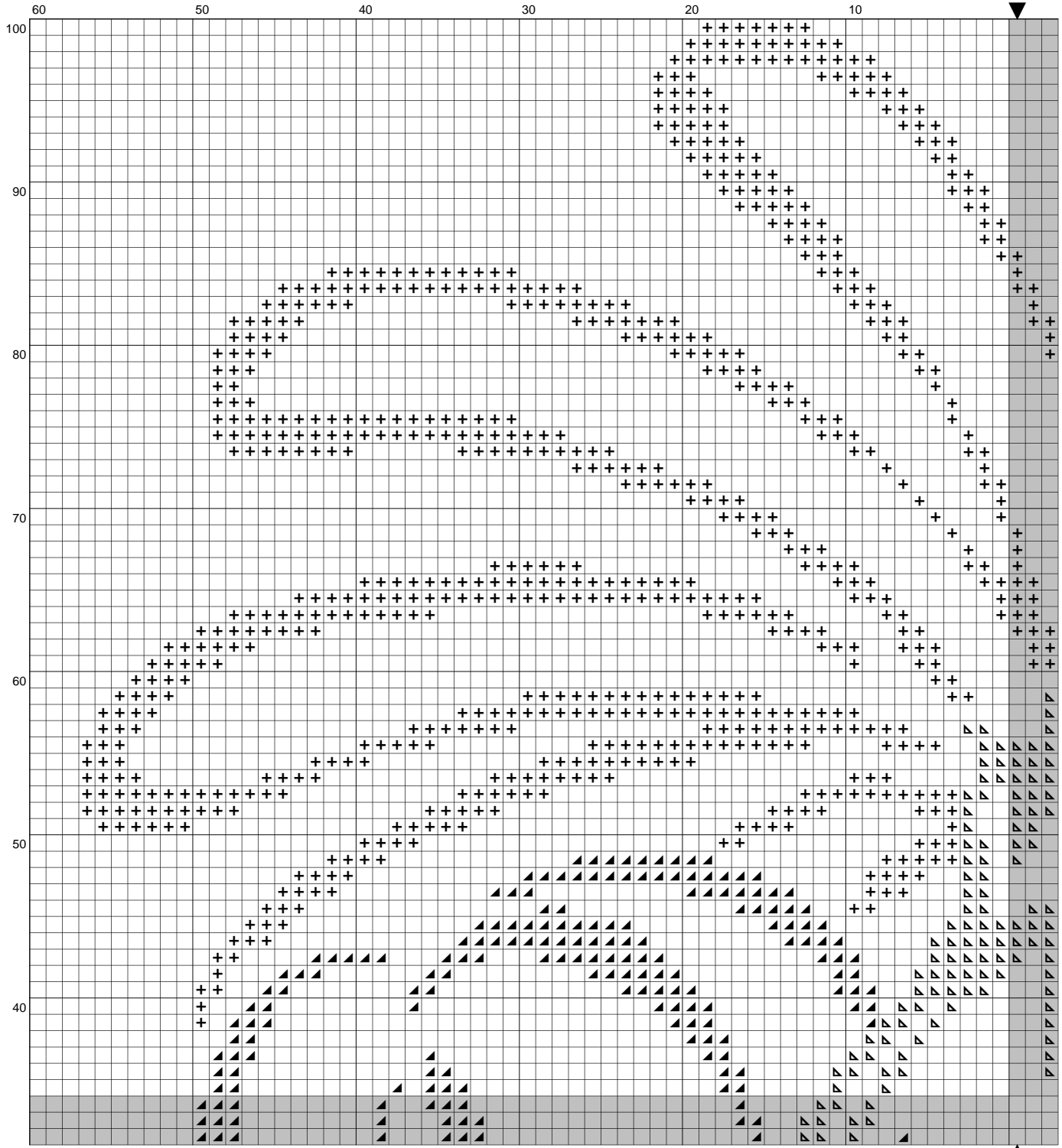


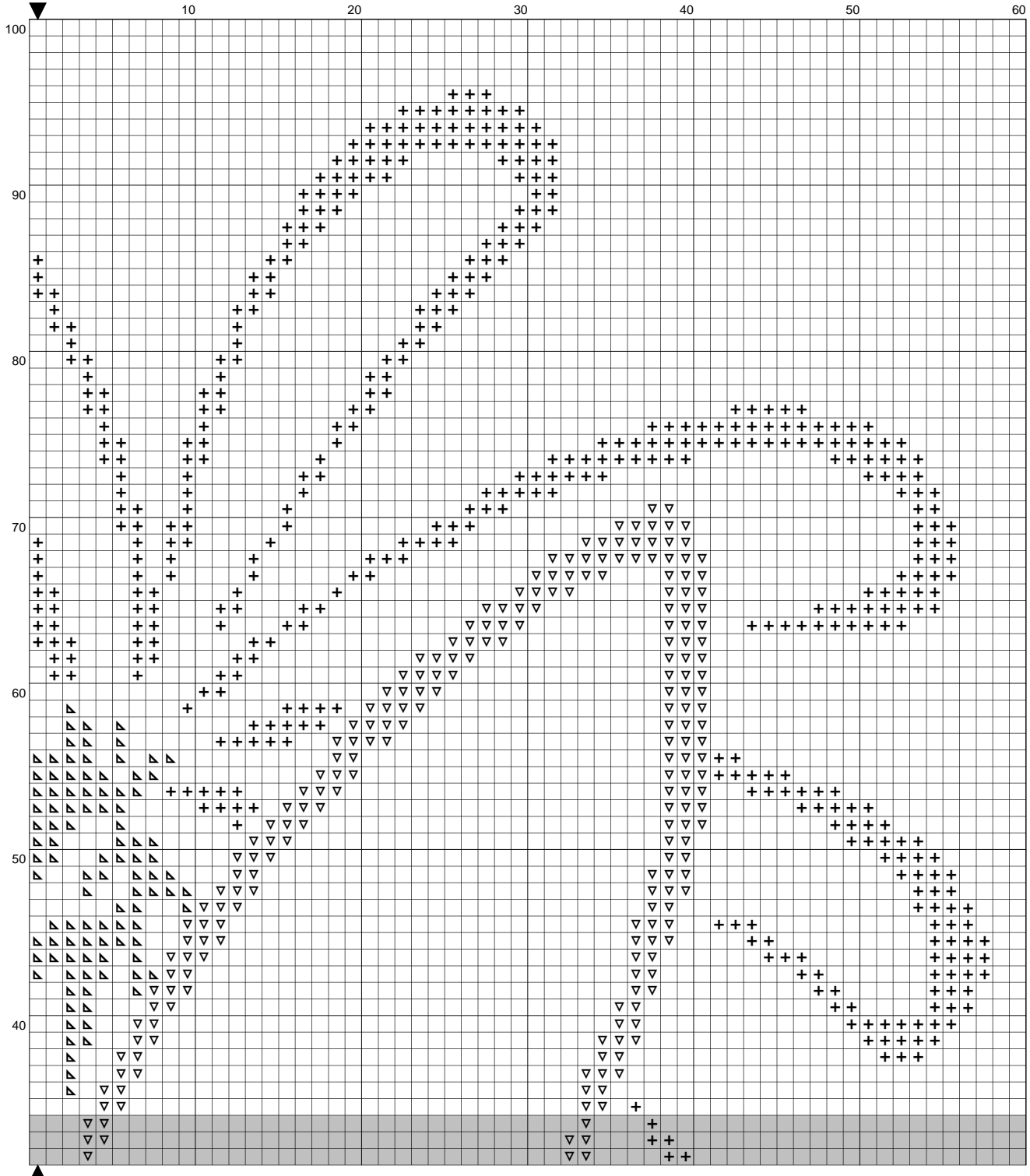
# STITCHX

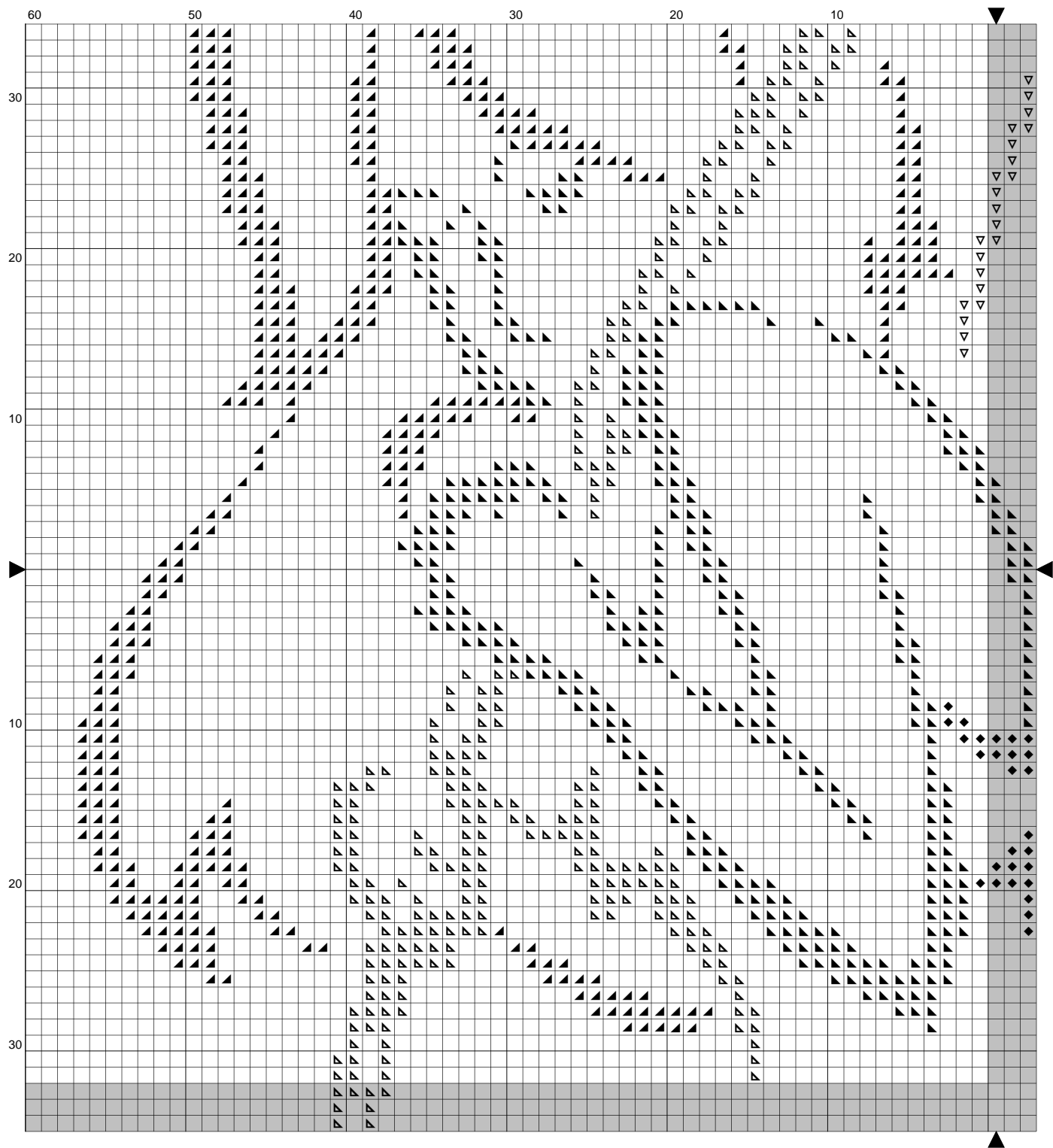
## Outline Fairy

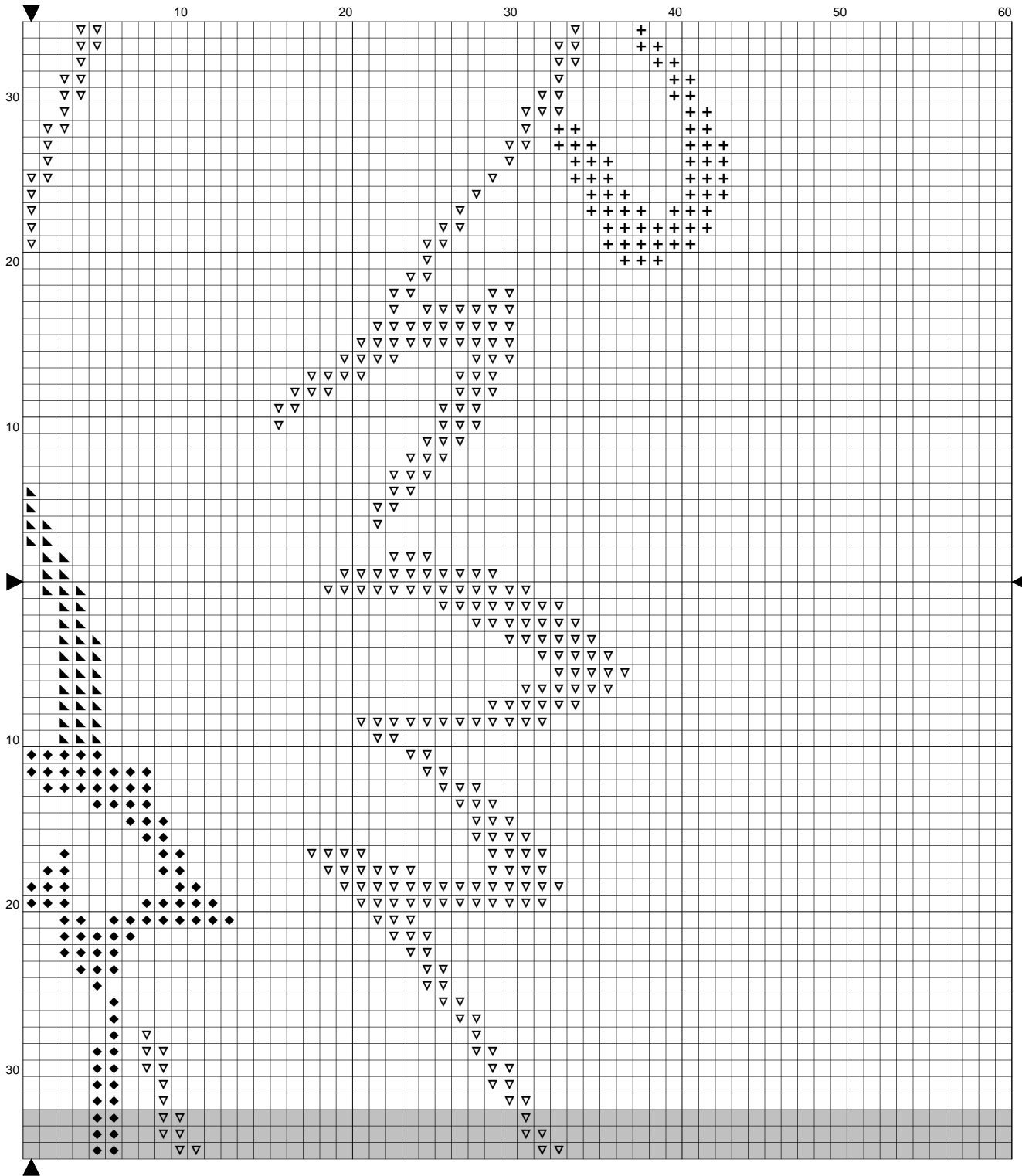


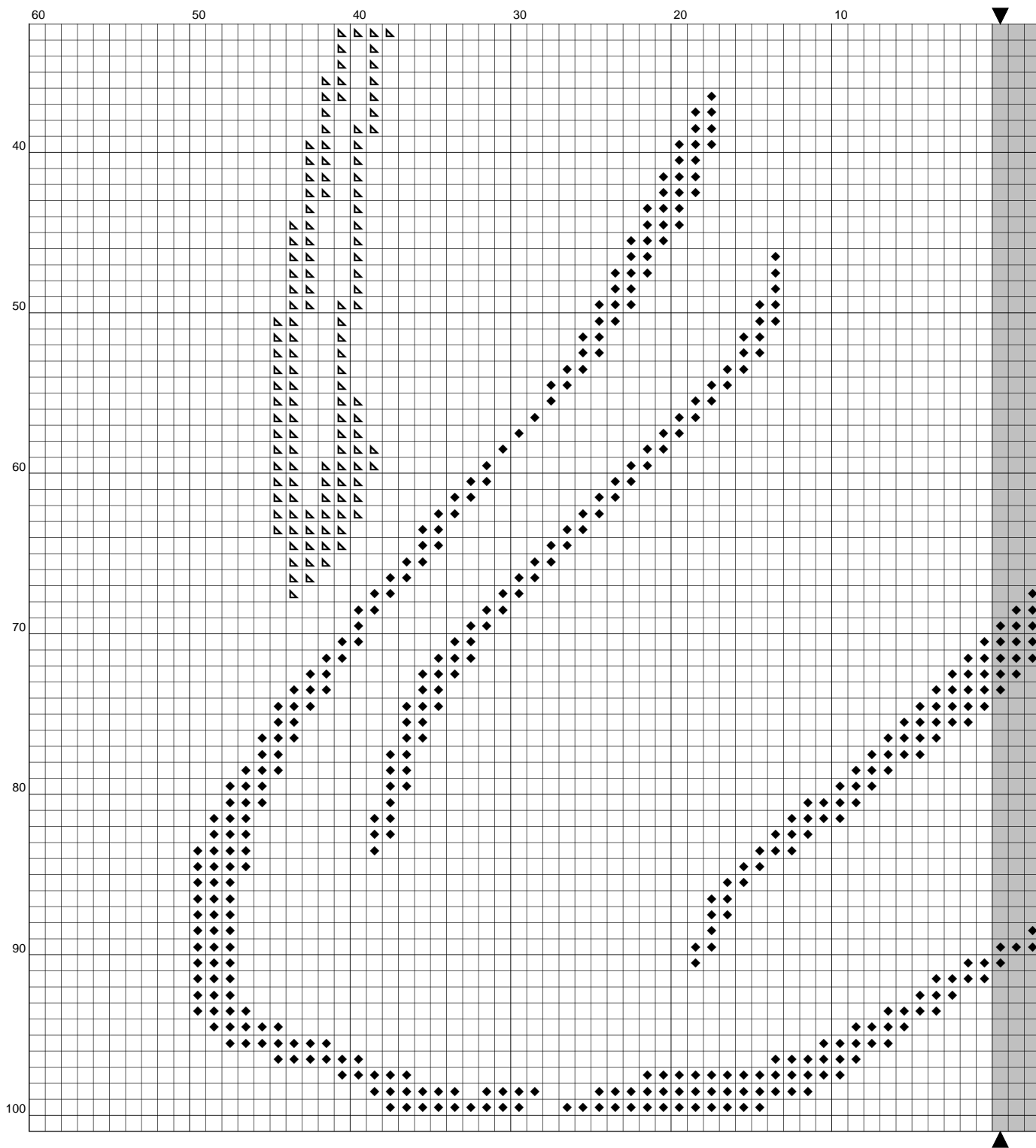
©2009 StitchX.com  
All rights reserved.

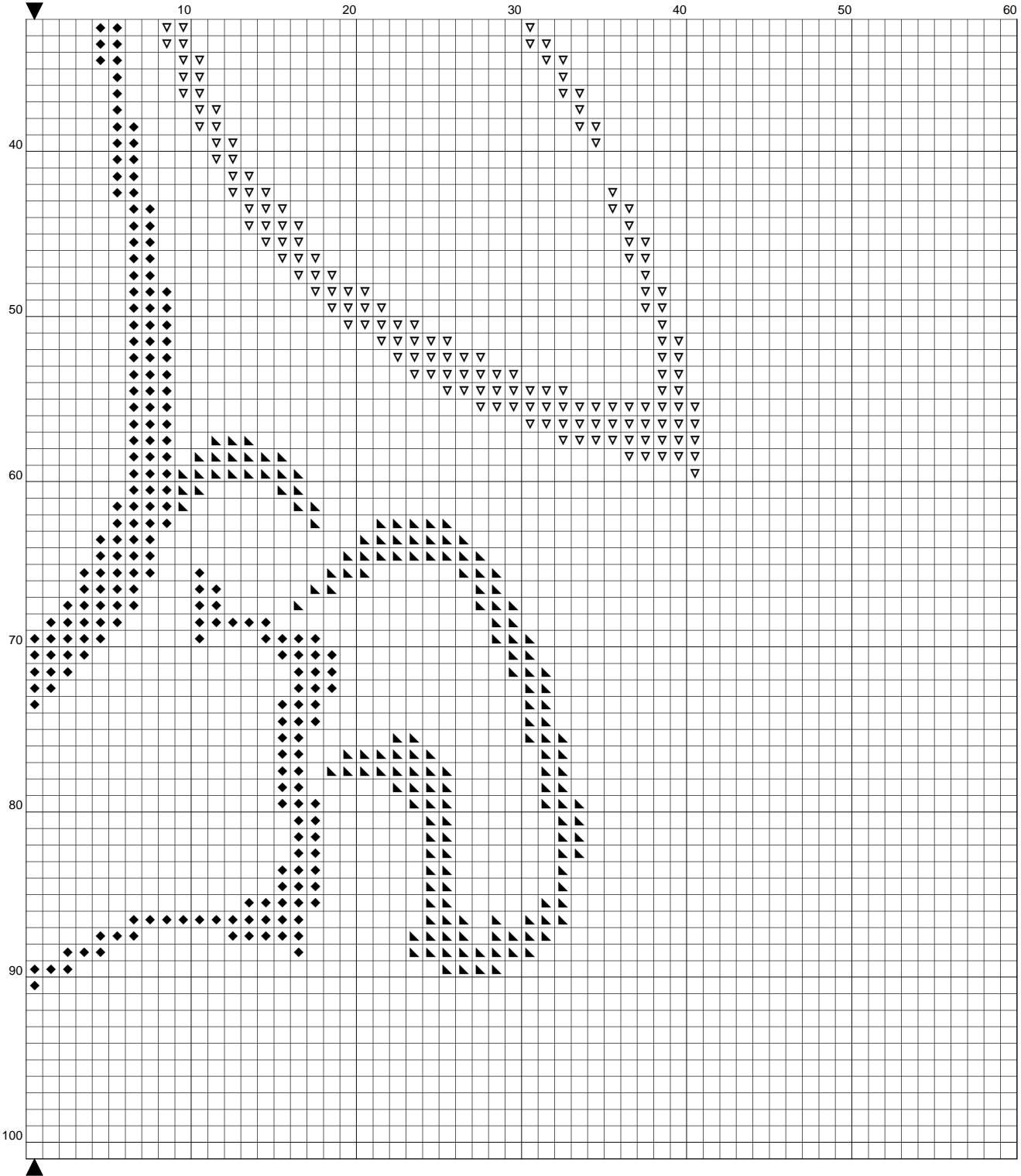












## Instructions and Symbol Key for Design "Outline Fairy"

---

**Fabric:** 14 count

**Stitches:** 115 x 200      **Size:** 8.21 x 14.29 inches or 20.86 x 36.29 cm

**Colours:** DMC

Use 2 strands of thread for cross stitch

<u>Sym</u>	<u>No.</u>	<u>Colour Name</u>	<u>Sym</u>	<u>No.</u>	<u>Colour Name</u>
▲	3854	Spicey gold	▴	3847	Deep teal green
+	3803	Bordeaux wine mauve	▽	995	Carribean blue
◆	814	Deep wine red	▾	869	Coffee brown

This chart has been designed and printed with our best intentions of being without mistakes. However, the possibility of human error, printing mistakes or the variation of individual stitching does exist, and we regret that we cannot be responsible for this.

Note: The shaded blocks on the chart represent overlapping stitches.

### STITCHING INSTRUCTIONS:

When purchasing your fabric for these large designs, you may wish to choose White or Antique White fabric. All of the fabric will be completely covered, so colored or hand dyed fabric cannot really be seen once you are finished stitching.

The finished design size is shown above the floss key. Be sure to add about 8 inches to each dimension, so that you will have plenty of room for matting and framing. For example, if the design size is 20" x 24", purchase fabric size that is at least 28" x 32".

Choose the fabric type that you are most comfortable stitching on. Some stitchers love Aida cloth. These large designs are ideal for Aida, because there are no fractional stitches. Of course, they stitch up nicely on a nice sturdy evenweave fabric (Jubilee, Jobelan, Lugana) or linen as well.

If possible, serge or zig-zag the edges of your fabric before beginning stitching.

Most stitchers prefer to start large solid designs in one corner instead of the middle. To do this, measure your fabric and decide how much extra you have on each side. If your fabric is 8 inches wider than your design, then you have 4 inches on each side horizontally extra. Next, measure how tall your fabric is. Again, decide how much extra you have on the top and bottom. We recommend about 4 inches on each side and top and bottom. (see size information in 2nd paragraph). Once you have determined how much extra you have, measure in from that corner. This is where you will begin stitching. Make sure you have the correct page according your page layout. (see below).

For best results, print 2 copies of pattern. Use one for a master copy and one for marking as needed. With your master copy, lay out all pages according to diagram below and tape together

before stitching. Use this set as a reference.

Using your working copy, find the page that you will start stitching with (typically in one corner) and use it to mark with your highlighter or pencil as you stitch. When you have finished a large section or a full page, be sure to mark that entire section out on your master copy.

All stitches are full cross stitches. Stitch on 14 or 28 count fabric using 2 strands of floss. There is no backstitching. You will find that a color may appear that doesn't look like it belongs. For best final results, use the floss color indicated. These subtle colors will add shading and dimension to your project. Some stitchers will make tiny substitutions for single stitches here and there. It's *\*your\** project, so you decide what you would like to do. The bottom line is that stitching should be enjoyable!

Choose an area that you are comfortable working in on the chart, whether it be a 10x10 block or a 30x30 area. Work this area, mark it off and then move to the next block. After a large area is finished, you can back away from your stitching and begin to see it taking shape!

This chart is spread over 6 pages. Your page layout will be as follows:

1	2
3	4
5	6

Copyright © StitchX 2009 All rights [reserved](#).

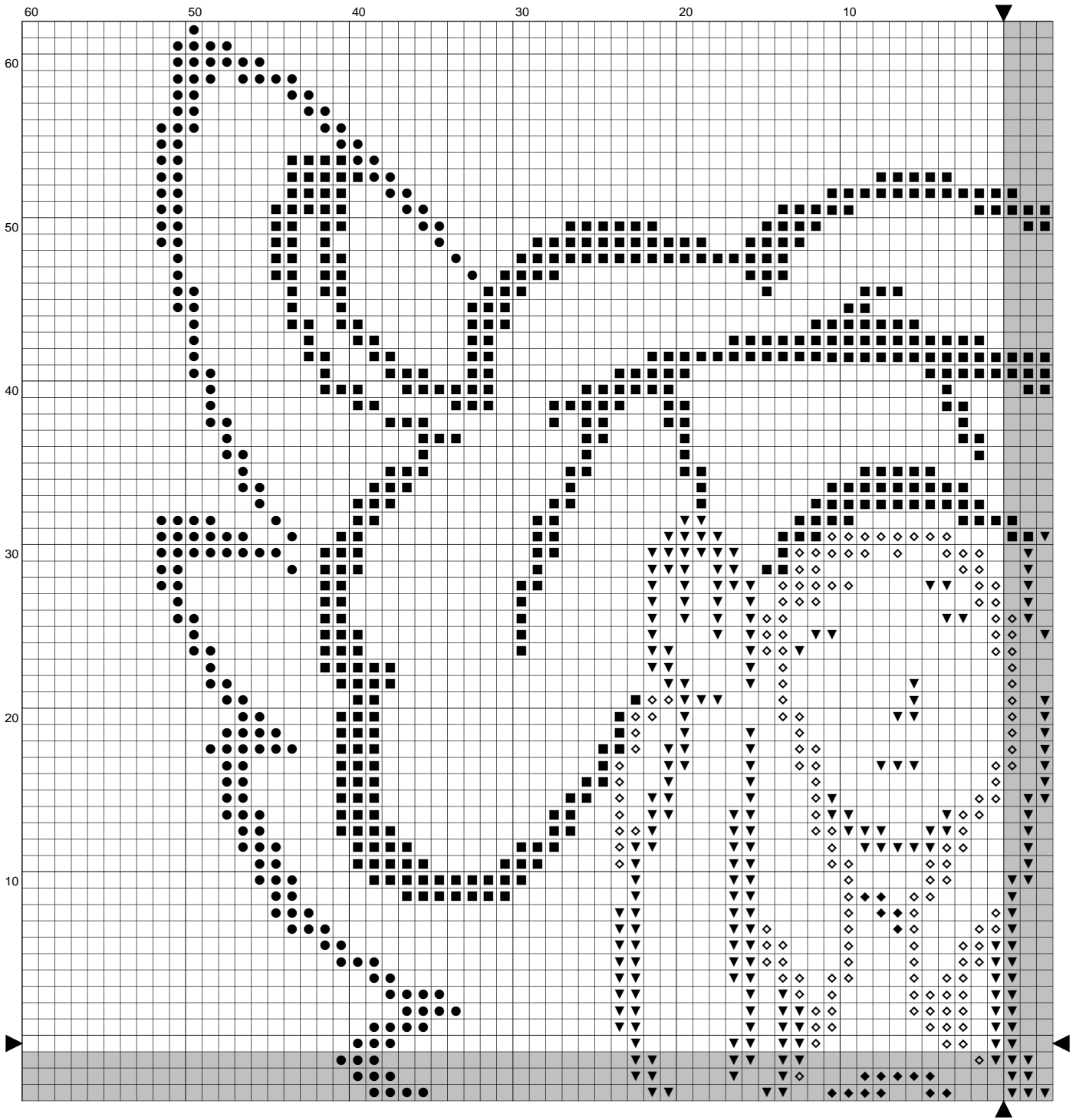
ENJOY YOUR PROJECT!

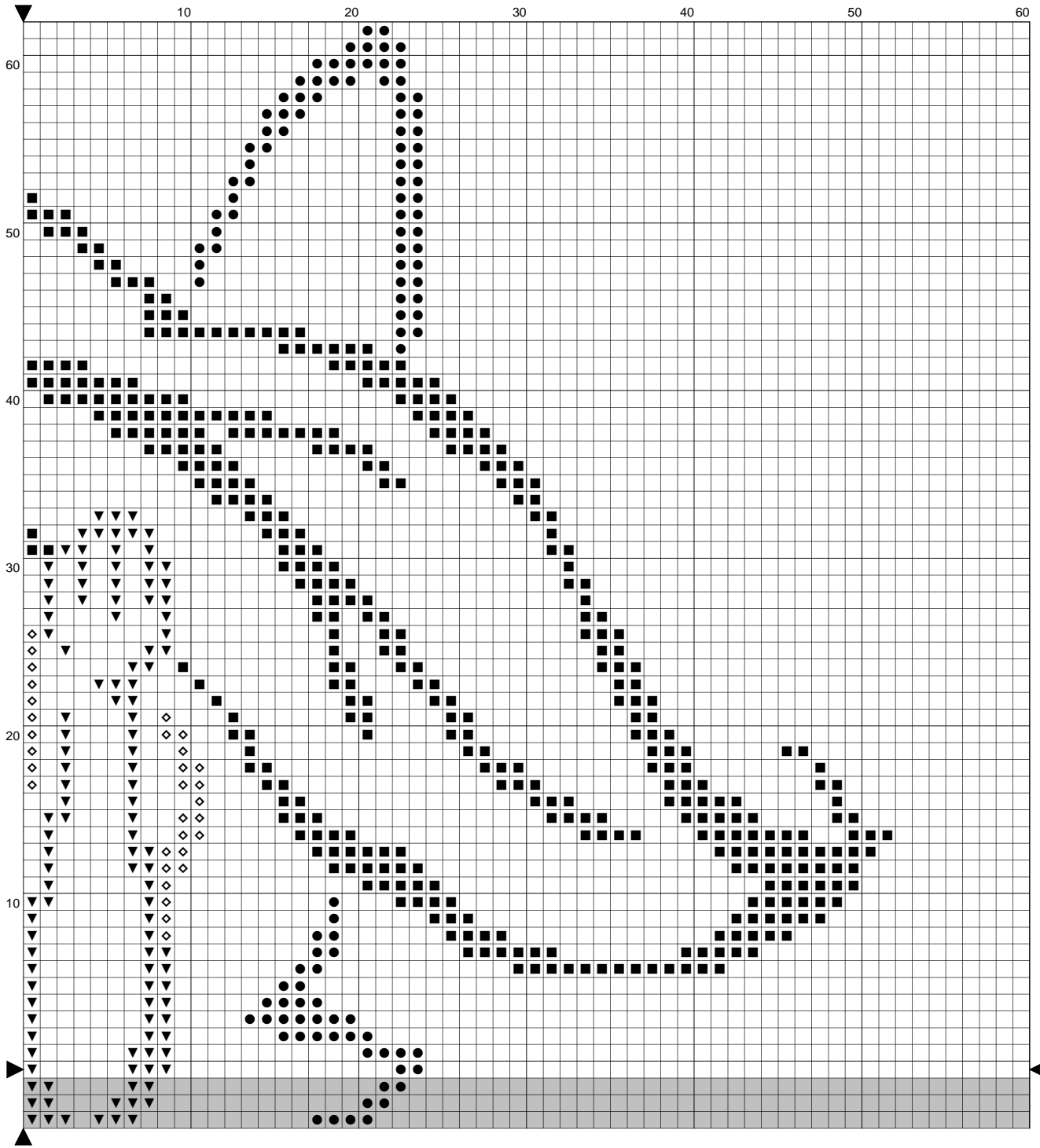
# STITCHX

## Rainbow Fairy

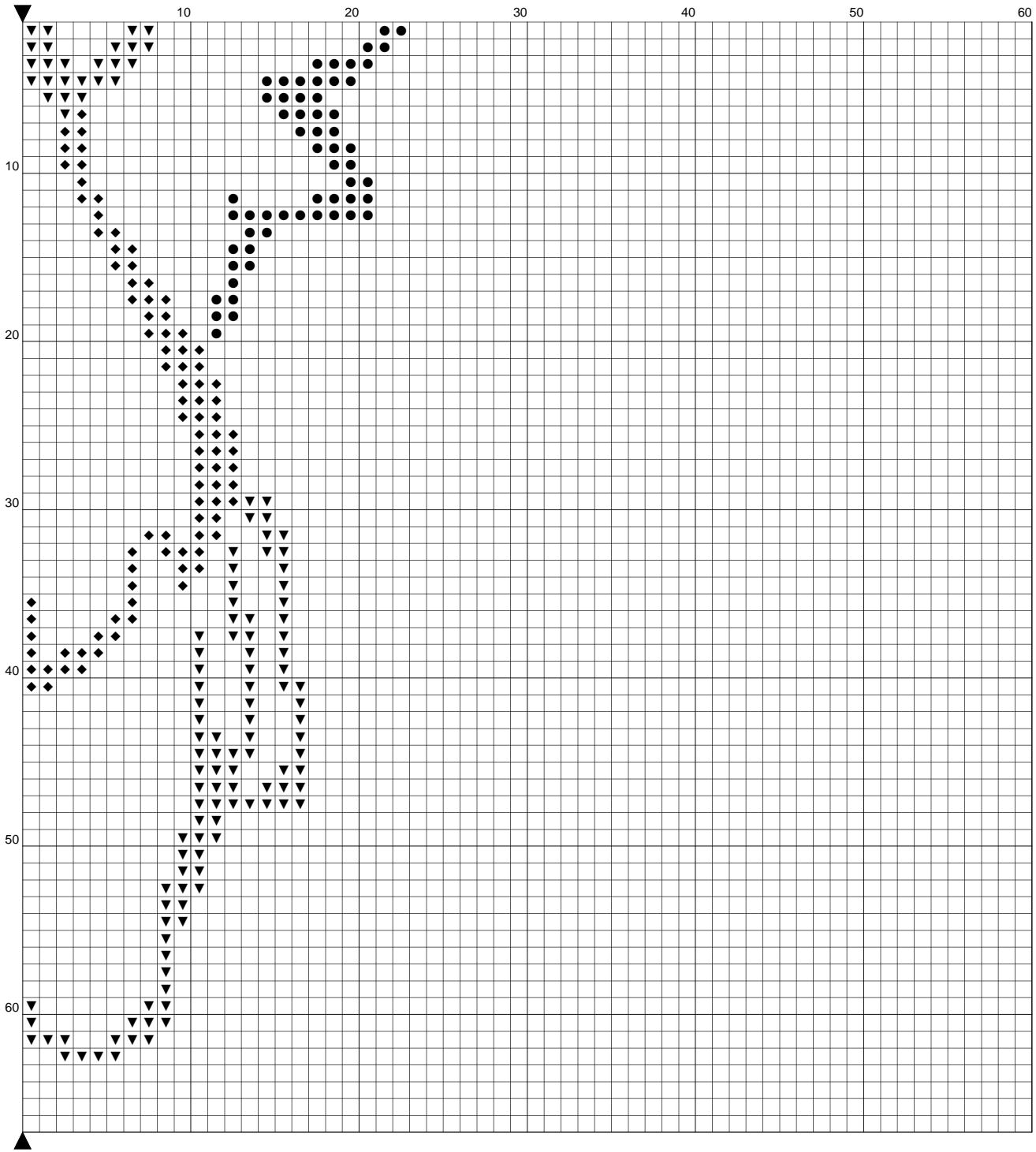


©2009 StitchX.com  
All rights reserved.









## Instructions and Symbol Key for Design "Outline Fairy - Small"

---

**Fabric:** 14 count

**Stitches:** 104 x 125      **Size:** 7.43 x 8.93 inches or 18.87 x 22.68 cm

**Colours:** DMC

Use 2 strands of thread for cross stitch

<u>Sym</u>	<u>No.</u>	<u>Colour Name</u>	<u>Sym</u>	<u>No.</u>	<u>Colour Name</u>
■	3817	Polar tree green	●	3755	Pastel blue
▼	3774	Pale desert sand	◇	3855	Autumn gold
◆	3042	Lilac			

This chart has been designed and printed with our best intentions of being without mistakes. However, the possibility of human error, printing mistakes or the variation of individual stitching does exist, and we regret that we cannot be responsible for this.

Note: The shaded blocks on the chart represent overlapping stitches.

### STITCHING INSTRUCTIONS:

When purchasing your fabric for these large designs, you may wish to choose White or Antique White fabric. All of the fabric will be completely covered, so colored or hand dyed fabric cannot really be seen once you are finished stitching.

The finished design size is shown above the floss key. Be sure to add about 8 inches to each dimension, so that you will have plenty of room for matting and framing. For example, if the design size is 20" x 24", purchase fabric size that is at least 28" x 32".

Choose the fabric type that you are most comfortable stitching on. Some stitchers love Aida cloth. These large designs are ideal for Aida, because there are no fractional stitches. Of course, they stitch up nicely on a nice sturdy evenweave fabric (Jubilee, Jobelan, Lugana) or linen as well.

If possible, serge or zig-zag the edges of your fabric before beginning stitching.

Most stitchers prefer to start large solid designs in one corner instead of the middle. To do this, measure your fabric and decide how much extra you have on each side. If your fabric is 8 inches wider than your design, then you have 4 inches on each side horizontally extra. Next, measure how tall your fabric is. Again, decide how much extra you have on the top and bottom. We recommend about 4 inches on each side and top and bottom. (see size information in 2nd paragraph). Once you have determined how much extra you have, measure in from that corner. This is where you will begin stitching. Make sure you have the correct page according your page layout. (see below).

For best results, print 2 copies of pattern. Use one for a master copy and one for marking as needed. With your master copy, lay out all pages according to diagram below and tape together

before stitching. Use this set as a reference.

Using your working copy, find the page that you will start stitching with (typically in one corner) and use it to mark with your highlighter or pencil as you stitch. When you have finished a large section or a full page, be sure to mark that entire section out on your master copy.

All stitches are full cross stitches. Stitch on 14 or 28 count fabric using 2 strands of floss. There is no backstitching. You will find that a color may appear that doesn't look like it belongs. For best final results, use the floss color indicated. These subtle colors will add shading and dimension to your project. Some stitchers will make tiny substitutions for single stitches here and there. It's *\*your\** project, so you decide what you would like to do. The bottom line is that stitching should be enjoyable!

Choose an area that you are comfortable working in on the chart, whether it be a 10x10 block or a 30x30 area. Work this area, mark it off and then move to the next block. After a large area is finished, you can back away from your stitching and begin to see it taking shape!

This chart is spread over 4 pages. Your page layout will be as follows:

Copyright © StitchX 2009 All rights reserved.

ENJOY YOUR PROJECT!